

August 2009, Kottlingbrunn / Austria

## **PRESS RELEASE**

Wittmann Battenfeld and Wille System GmbH:

### **Everything under control with innovative process data acquisition**

*Productivity, manufacturing quality and adherence to delivery schedules are crucial, especially in times of economic turbulences. In cooperation with its partner, Wille System GmbH, Wittmann Battenfeld now offers the innovative Battenfeld K4 tool for process data acquisition. Its structure, data format and menu system are perfectly tailored to meet the stringent demands of the plastics processing industry.*

Process data acquisition furnishes vital information for optimal analysis and improvement of production processes. It serves to control manufacturing process functions and to monitor their results. It enables processors to control the material flow, to analyze virtually all production data and to plan, optimize and evaluate their production flow and inventory.

#### **Battenfeld K4 - security for all production data**

In order to give their customers a decisive competitive edge, Wittmann Battenfeld and Wille System GmbH have joined forces to form a future-oriented strategic partnership.

The intelligent Battenfeld K4 database concept has been developed, which is operated on a server for central data administration and is also directly integrated in the Unilog B6 machine control system.

From the machine's parameter settings, quality assurance, maintenance, preliminary and final costing, order-related time data collection, shop floor layout and innumerable evaluation options to open item management, this system provides an unequalled range of service functions.

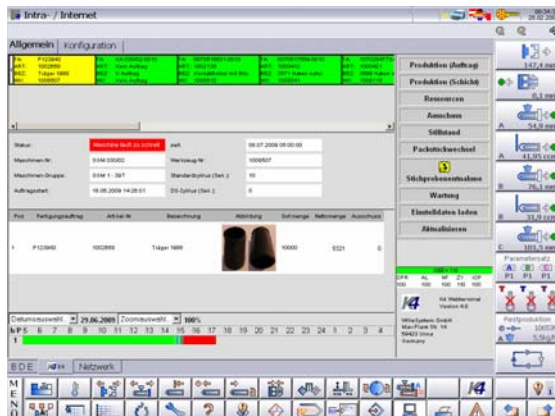
The entire machinery of a company, including machines at other locations and in other countries, can even be visualized and monitored from the B6 control system - regardless of the types and brands of injection molding machines.

With this solution, Wittmann Battenfeld and Wille are offering a unique service package. Reiner Conradi, Managing Director of Wille, comments: "The innovative competence and state-of-the-art control system solutions from Wittmann Battenfeld were the decisive motives for Wille's entering into this partnership. We are now jointly offering a flexible, favorably priced modular system with products that are perfectly matched and tailor-made to meet our customers' needs. I think it is no understatement to speak of a 'marriage' between corporate processes and process data - in the spirit of the motto 'We connect worlds'".

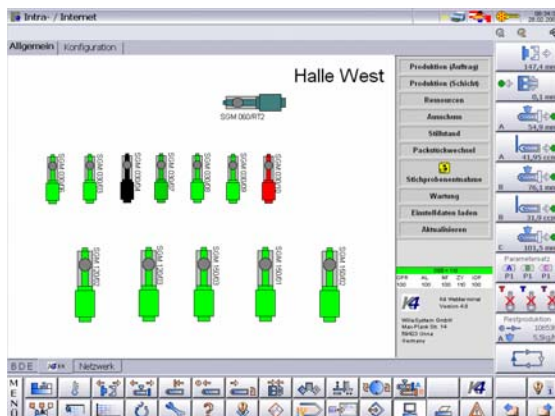
Georg Tinschert, Managing Director of Wittmann Battenfeld, emphasizes: "Battenfeld K4 is yet another example of our philosophy of 'Everything from a single source' optimally put into practice. I am pleased to have found an internationally operating partner in Wille and am looking forward to meeting the challenges with our existing and new customers."

### **Live on show at the Fakuma 2009**

All exhibits on display at the booth of Wittmann Battenfeld (hall B1, booth 1204) are connected to the process data acquisition tool. All of their data can be retrieved directly on the machine, at the booth's service corner, or at the booth of Wille System GmbH (hall A1, booth 1401).



**Fig. 1:** Battenfeld K4 provides a comprehensive overview of all production key figures



**Fig. 2:** The entire corporate machinery can be monitored and controlled via the Battenfeld K4 tool integrated in the machine's control system

## Contact:

### **Wittmann Battenfeld GmbH**

Wiener Neustädter Straße 81  
A-2542 Kottlingbrunn / Austria  
Tel: +43 2252 404-1400  
Fax: +43 2252 404-1002  
susanne.binner@wittmann-group.com  
[www.wittmann-group.com](http://www.wittmann-group.com)

### **Wille System GmbH**

Max-Planck-Straße 14  
D-59423 Unna / Germany  
Tel.: +49 2303 96 111-0  
Fax: +49 2303 96 111-11  
office@willesystem.com  
[www.willesystem.com](http://www.willesystem.com)