

Clamping Unit		HM MC 45							
Clamping force	kN	450							
Distance between tie bars	mm x mm	320 x 320							
Mould height (min.)	mm	195							
Opening stroke/opening force	mm/kN	375/26							
Maximum daylight	mm	570							
Ejector stroke/ejector force	mm/kN	100/26,4							
Dry cycle time ¹	s-mm	1,6 - 224							
Injection Unit		60				130			
Screw diameter	mm	14	18	22	18	22	25	30	
Screw stroke	mm	90				110		125	
Screw L/D ratio	mm	20				20		22	
Theoretical shot volume	cm ³	13,9	22,9	34,2	28	41,8	61,4	88,4	
Specific injection pressure	bar	3000	2593	1736	3000	2864	2218	1540	
Max. screw speed	min ⁻¹	498				318			
Max. plasticizing rate (PS) ²	g/s	1,7	5	7,2	3,2	4,6	8,5	12,3	
Max. screw torque	Nm	90	231		238		357		
Nozzle stroke/contact force	mm/kN	250/47				250/47			
Injection rate into air ³	cm ³ /s	32,7	54,1	80,7	32,7	48,9	63,1	90,9	
Injection rate into air with twin-pump (option)	cm ³ /s	65	108	161	77,7	116	150	216	
Drive									
Drive power	kW	18,5				18,5			
Oil tank volume	l	150				150			
Rotary Unit		460							
Diameter	mm	460							
Height	mm	100							
Weight	kg	150							
Rotary time 180°	s	0,9							
Number of cooling circuits		2 x G 1/4"							
Min. mold diameter/ Max. mold diameter	mm	250/471							
Max. mold weight ⁴	kg	400							
Max. mold weight on rotary unit	kg	200							

¹ according to EUROMAP 6

² according to Wittmann Battenfeld norm

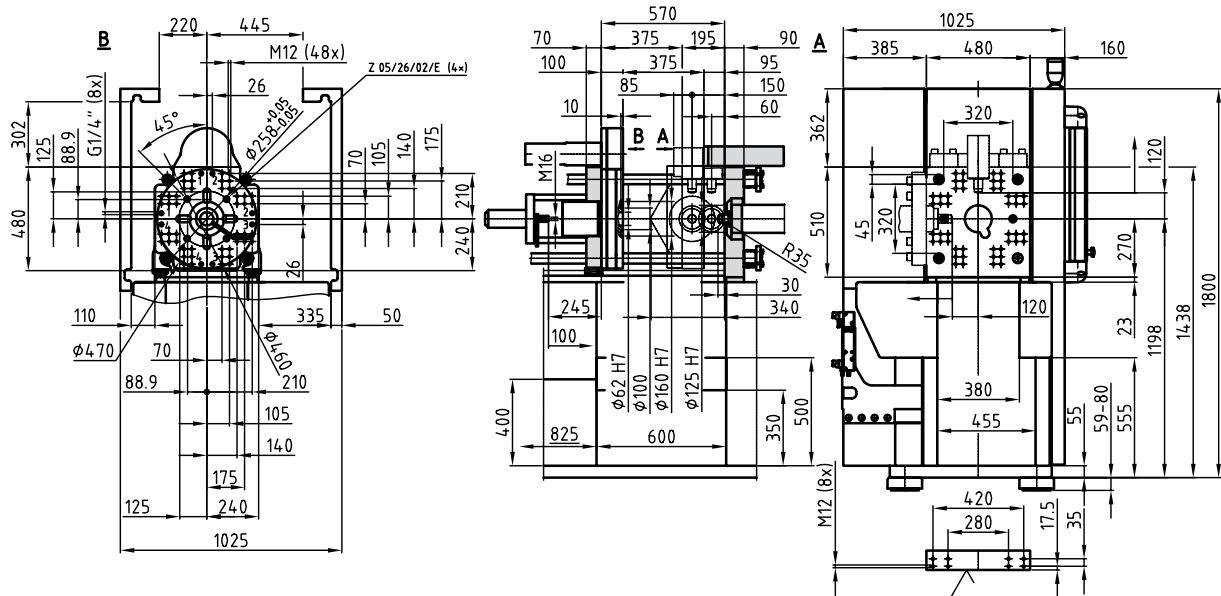
³ increased injection rates are possible and depending on the chosen combination

⁴ max. 2/3 on clamping platen

Combinations	Weights	Dimensions in mm									
		V	L	a ⁵	b	c	d	e	f	g	h
HM 45/60H/60-130V-L	3500	3200	2600	3020	30	2990	825	640	1420	1136	900
HM 45/130H/60-130V-L	3500	3200	2600	3245	255						

⁵ max. length with middle screw diameter in back position

Mold clamping dimensions



Dimensions

