

## PROCESS DATA ACQUISITION and REMOTE CONTROL with K4 and UNILOG B6



Technology working for you.

### Optimize your business processes!

Your daily production routine keeps growing more and more complex. We help you to stay in control.

The use of process data acquisition software will help you to monitor and optimize the production processes on your shop floor. This method of data collection serves to control manufacturing process functions and to check their results. It enables you to control the material flow, to analyze virtually all transaction data, and to plan and evaluate your production flow and inventory.

**K4** and UNILOG B6 offer you security and flexibility for all significant company data.

We offer you a modern database concept operating on one server for centralized data administration, which is also directly integrated into the WITTMANN BATTENFELD UNILOG B6 machine control system. Its structure, data format, menu system and tools are perfectly tailored to meet the stringent demands of the plastics processing industry. The integration of **K4** guarantees state-of-the-art technology, thus offering you 100% compatibility and serviceability.

**K4** provides you with a unique program package. From the machine's parameter settings, quality assurance, maintenance data, preliminary and final costing, orderrelated time data collection, shop floor layout and innumerable evaluation options to open item management, everything comes from a single, all-inclusive system.

This package covers the entire production data management portfolio.

- Optimal organization.
- Detailed overview.
- Safe data management.
- Fast evaluations.
- Exact history.
- Ultimate efficiency.

#### Components:

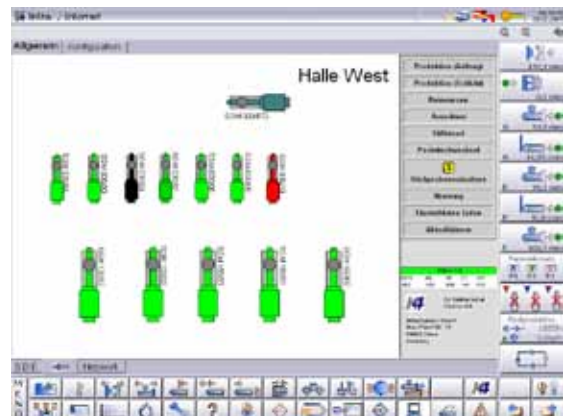
- K4 BATTENFELD.
- K4 classic.
- K4 factory.
- K4 impulse.
- K4 competence.

From now on, you will be able to start, stop or interrupt orders, or query their current status from the control terminals of all machines equipped with B6 control systems. You can view the material quantities required, the inventory or the residual running time and/or quantity per job order. You can also retrieve the data of job orders completed long ago, in order to view information about rejects and/or causes of machine downtime. All of this is possible from your control terminal. If so desired, you can retrieve these data from your entire shop floor equipment – regardless of the types or brands of machines involved.



Screenshot B6 control unit

The shop floor layout in your control system enables you to retrieve all relevant data relating to the production process in a simple way. You can make entries relating to rejects and/or machine standstills or machine parameter settings intuitively, simply by pressing a finger on the touch screen surface. It is now also possible to enter results of accompanying tests via the control system, such as random sample analyses. You can even monitor the entire machinery of your company from a single control terminal.



Screenshot B6 control unit

With BATTENFELD **14**, you will have a complete package solution fully integrated into your control system. As part of this program, we provide you with a comprehensive overview of your key production figures e. g. OEE-reports or modification log of process parameters, directly from your machine's control system.

Our motto "everything from a single source" also applies in this case.



Screenshot B6 control unit